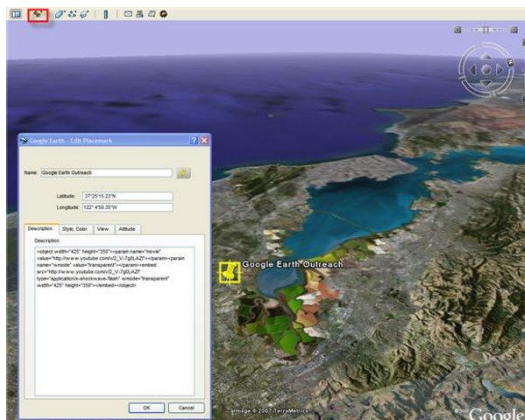


# Uploading Video to Google Earth

**NOTE: Videos are NOT automatically geotagged. These instructions assume that you already have a placemark in Google Earth at the point at which you took the video. It would be a good idea to take a geotagged photo of something right before you take the video. That way you will be able to create a placemark, and you will know which video goes there because it will have the same time on it as the photo.**

- 1) Make sure that you have converted your video down to a reasonable size. 20 or 30 megabytes may be workable, but requires a quality broadband connection.
- 2) Create a YouTube Account and upload your videos.
- 3) View your YouTube videos. Every video on the site has a panel on the right-hand side that features “Embed” code. Select and copy that.
- 4) Open Google Earth and select your placemark.
- 5) In the placemark’s description field, paste the YouTube Embed code from Step 3.



- 6) Click OK. Your video is now embedded. The placemark will now look like this.

